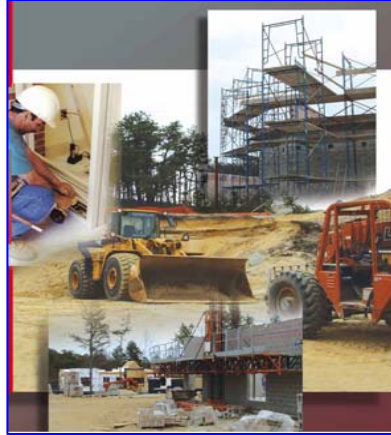


Means Metric Construction Cost Database

Primarily for commercial and residential buildings, facilities installations, and heavy construction. Costs are primarily for new construction or major renovation of buildings rather than repairs or minor alterations. Expanded sections on excavation, trenching and slipforming.



Price data you can trust for accurate budgeting and estimating:

- **New construction**
- **Repairs & renovation**
- **Change orders**
- **Cost Engineering**
- **Commercial & Industrial**

Your comprehensive estimating and cost planning resource.

- Provide a "realitycheck" for any estimate, bid or change order.
- Plug gaps in preliminary estimates.
- Quote benchmark prices for alternate material or design approaches.
- Double check your estimates.
- Estimate labor hours.
- Estimate work at project sites anywhere in the U.S. or Canada.
- Resolve disputes over billings with an impartial, universally respected authority.
- Price ADA and environmental hazard related construction.

Costs broken down into:

- Materials
- Labor
- Equipment
- Overhead and Profit

More than 27,000 unit cost lines completely updated and carefully prepared from the experience of 1,000's of contractors and suppliers in the 12 months just before the data is released.

Organized according to the MasterFormat04 system of classification and numbering as developed by the **Construction Specifications Institute (CSI)** and the **Construction Specifications Canada (CSC)**.



2009 Count of unit cost lines by CSI division:

CSI Division	Count	CSI Division	Count
1-General Requirements	488	21-Fire Suppression	70
2-Existing Conditions	901	22-Plumbing	2,139
3-Concrete	1,594	23-HVAC	1,064
4-Masonry	1,016	26-Electrical	1,525
5-Metals	1,749	27-Communications	101
6-Wood, Plastics & Compos.	1,998	28-Elect. Safety & Sec.	72
7-Thermal & Moisture Protection	1,363	31-Earthwork	2,509
8-Openings	1,838	32-Exterior Improvements	1,401
9-Finishes	1,818	33-Utilities	1,800
10-Specialties	970	34-Transportation	110
11-Equipment	981	35-Waterway & Marine	256
12-Furnishings	529	41-Mat. Proc. & Handling Equip.	50
13-Special Construction	715	44-Pollution Control Equip.	104
14-Conveying Equipment	282	Total Lines	27,443