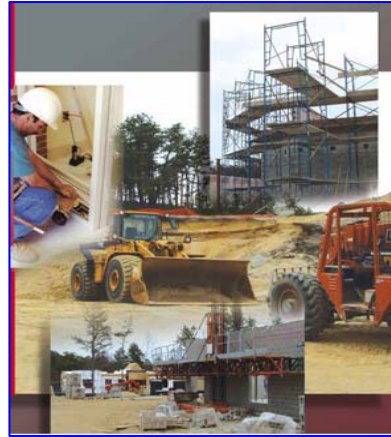


RSMMeans Commercial Composite Cost Database

More than 46,000 unit price costs for commercial construction items for electrical, mechanical, and plumbing work. Also includes modular and job built formwork, precast, cast-in-place and accessories. Complete price guidance for estimating concrete and masonry.



Combined database includes:

- **Electronic safety & security & Communication systems**
- **Stainless steel and other misc. fittings**
- **HVAC, fire protection, controls, & plumbing**
- **Piping & Fixtures**

Your comprehensive estimating and cost planning resource combines these RSMMeans cost databases:

- Building Construction
- Mechanical Cost Data
- Electrical Cost Data
- Plumbing Cost Data

Use these databases to:

- Estimate specialized mechanical, electrical, and plumbing projects.
- Provide a "reality check" for any estimate, bid or change order.
- Quote benchmark prices for alternate material or design approaches.
- Resolve disputes over billings with an impartial, universally respected authority.

Costs broken down into:

- Materials
- Labor
- Equipment
- Overhead and Profit

Organized according to the MasterFormat04 system of classification and numbering as developed by the **Construction Specifications Institute (CSI)** and the **Construction Specifications Canada (CSC)**.



2009 Count of unit cost lines by CSI division:

CSI Division	Count	CSI Division	Count
1-General Requirements	604	21-Fire Suppression	333
2-Existing Conditions	524	22-Plumbing	8,699
3-Concrete	1,460	23-HVAC	6,896
4-Masonry	837	26-Electrical	9,809
5-Metals	1,735	27-Communications	200
6-Wood, Plastics & Compos.	1,839	28-Elect. Safety & Sec.	109
7-Thermal & Moisture Protection	1,383	31-Earthwork	1,897
8-Openings	1,896	32-Exterior Improvements	784
9-Finishes	1,792	33-Utilities	1,567
10-Specialties	973	34-Transportation	120
11-Equipment	984	35-Waterway & Marine	17
12-Furnishings	531	41-Mat. Proc. & Handling Equip.	49
13-Special Construction	729	44-Pollution Control Equip.	113
14-Conveying Equipment	281	Total Lines	46,161